

DP2 Cable Lay Vessel



• Main features:

- ☐ DP-2 Cable Lay Vessel
- ☐ Cable Laying Vessel Class Notation
- ☐ Simultaneous Lay & Burial Plough (up to 1500m WD) with dedicated LARS system
- ☐ Deep Water Cable Laying Spread (9 Wheel Pair LCE)
- ☐ Cable Lay via Makai Lay integrated to Vessel Survey and Lay Spreads
- ☐ Survey Spread (Navigation & Positioning – EIWA NAVIPAK & MAKAI LAY)
- ☐ Kongsberg DP2
- ☐ Cable Lay & PLGR Deck Spread
- ☐ High Power DP capability plot
- ☐ Deck Crane (25t) & A-Frame (Stern – 55t)
- ☐ Cable tanks: 1 x 1000tn and 1 x 250tn

Power Sub Link SA(PSL)
 41 Digeni, Voula, Athens, Greece, 16673
www.PowerSubLink.com
commercial@psl-mt.com
 VAT 800 357 365

VESSEL	
Model:	UT 705
Type:	DP2 Multi Purpose Support Vessel Accommodation, Cable Lay Notation
Port of Registry:	Panama city
Classification society:	DNV
Additional Class Notation:	Cable Lay, AUTUMS, DYNAPOSAM/ATR

MAIN PARTICULARS VESSEL	
Built	Brattvaag, Norway
Converted type:	2025 (CLV)
LOA:	81.9m
Breadth Moulded:	18.00
Summer Draft	4.98m
Gross Tonnage:	2637t
Deadweight:	3118t
Strength Fuel Oil:	5t/m2
Ballast / Drill Water:	953 m3
Portable Water:	733m3

ACCOMODATION / FACILITIES	
Total Berths 70	2 x Client VIP, 6 x 1 Man, (19+12) x 2 Man, 1 x Gym, 1 x Lounge, 1 x Office

BRIDGE EQUIPMENT	
Auto Pilot:	1 x Anschutz Autopilot
Radar:	2 x Furuno ARPA Radar
Gyro:	2 x Anschutz Gyrocompass 1 x Sperry Marine
GPS Navigator:	1 x JRC GPS compass 1 x Furuno GP 150
Bridge Nav.:	1 x FURUNO Speed Log
Echosounder:	1 x Skipper Echo Sounder
Survey Suite:	Navi-pack survey system

COMMUNICATION EQUIPMENT1	
1 x Furuno MF/HF Transmitter/Receiver	1 x Sailor R501 Watch Receiver
4 x Sailor VHF RT 2048	2 x VHF DSC Sailor RM 2042
2 x Inmarsat C	1 x Fleet 77 Inmarsat
1 x Navtex	2 x AIS Tron SART

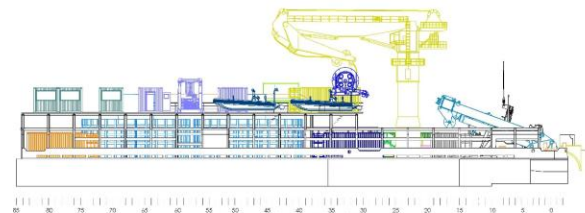
CRANES	
1x 25tn at 5m& 10tn at 20m Knuckle Boom Offshore Crane, 100m Hoisting	2 x Provisions cranes 5tn

REFERENCE SYSTEMS FOR DP2 SYSTEM	
2x DGPS	3 x GYRO
1 x Fan Beam	3 x MRU
USBL (Pole Mounted)	3 x GILL Wind Sensors

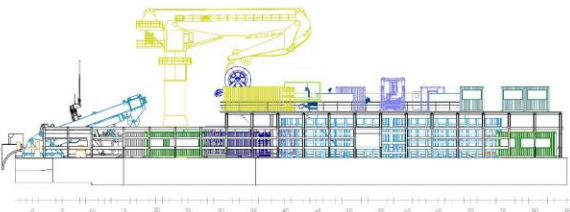
MACHINERY	
Main Engines:	2 x Bergen BRM-6, 3,300 BHP
Rudders	2 x Ulstein high turning rudders
Bow Thrusters:	1 x Rolls Royce, 1,000 BHP
Bow Azimuth thruster	1 x Ulstein Retractable Gyro Propeller type 230 VROS
Stern Thrusters:	2 x Rolls Royce, 800 BHP each
Gearbox:	Ulstein Single Reduction Gearbox 600 AGSC-KP2S
Propellers:	2 x Ulstein CPP 2650 mm. 4 blades
Total Power:	6,600 BHP (50 tons BP)
M/E Output:	2,430 kW @ 750 rpm
Shaft Generators:	2 x 1,680 kW
Aux Generators:	2 x 320 kW
Containerized Diesel Generators:	1 x 1,000kW

ADDITIONAL FEATURES	
A frame - LARS	55T dynamic (~10.0m Reach from Stern)
Cable Lay	1 x 100kN 9WP LCE 2 x Cable Tanks (10.6m OD / 4m Height / 3m ID (Adjustable) 3m MBR: Stern Chute x 2 + Cable Trackways
Universal Jointing & Testing Spread (UJ)	Complete Fiber Optic Cable Repair and Jointing Spread onboard (integrated test and joint room)
Trencher Plough (Integrated to Vessel Systems)	<ul style="list-style-type: none"> 2000m Rated 55Ton Pull Force 1.5m and 2.0m Shear 1.5m Bend Radius Cable (20mm to 160mm OD on the Joint Boxes)

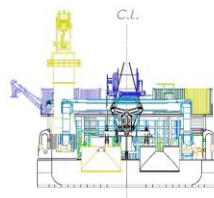
General arrangement



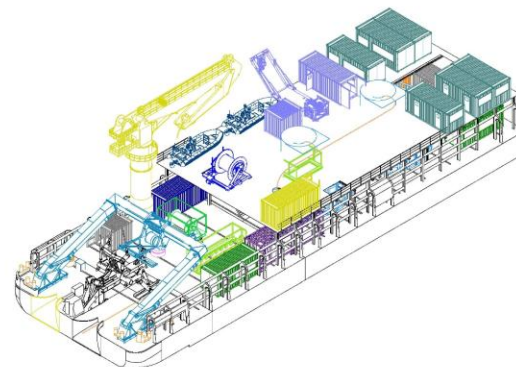
LOOKING SB



LOOKING PS



LOOKING FROM ASTERN



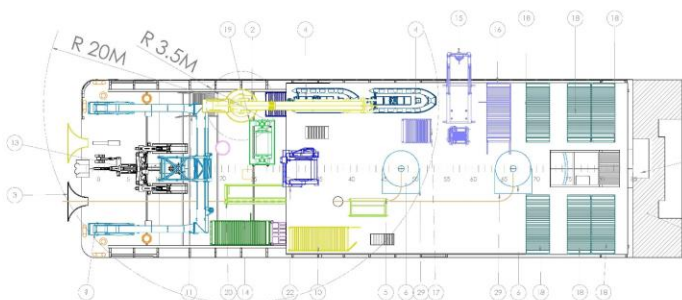
ISOMETRIC VIEW

GENERAL PARTICULARS:

LENGTH, OA : 80.71M
 LENGTH, BP : 76.20M
 BREADTH : 18.0M (MLD)
 DEPTH : 7.1M (MLD)
 MAX DRAUGHT: 4.97M (MLD)
 CLASS : DNV
 IMO : 8912340

REMARKS:

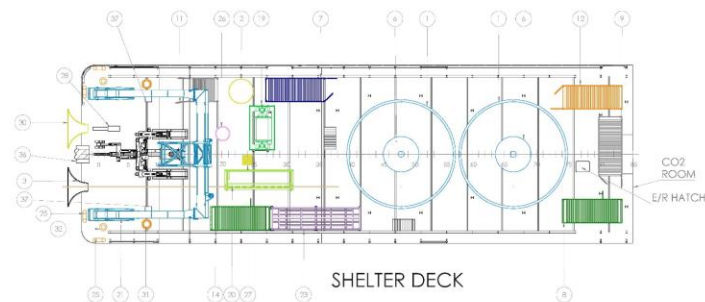
- DESIGN OF SEVERAL DECK EQUIPMENT IS INDICATIVE.
- MEZZANINE DECK SHALL BE LOCALLY HEAVILY REINFORCED BELOW TOW WINCH.
- FOR THE TOW WINCH A 8 DEGREE HORIZONTAL FLEET ANGLE HAS BEEN TAKEN INTO ACCOUNT (FROM SPOOLING DEVICE).
- FOR THE TOW WINCH A DOWNWARD AND UPWARD FLEET ANGLES NEED TO PROVIDED BY THE MAKER
- FOR THE UMBILICAL WINCH A 15 DEGREE UPWARDS FLEET ANGLE HAS BEEN CONSIDERED.



MEZZANINE DECK

EXISTING STAIRCASE TO BE USED FOR THE NEW ACC. BLOCKS

EXISTING DECK AREA



SHELTER DECK

CO2 ROOM
 E/R HATCH

ITEM NO.	ITEM NUMBER	DESCRIPTION	QTY.
1	CABLE TAIL ASSEMBLY		
2	MAIN CRANE OFF CRANE		
3	CABLE CRANE		
4	WINDMILL		
5	CABLE TAIL CHUTE		
6	WPL CONTAINER 20 FT	20FT	
7	POUCHES TOW WINCH & A-FRAME CONTROLS CABIN	20FT	
8	WORKSHOP	20FT	
9	WORKSHOP	20FT	
10	WORKSHOP	20FT	
11	WORKSHOP	20FT	
12	WORKSHOP	20FT	
13	WORKSHOP	20FT	
14	WORKSHOP	20FT	
15	WORKSHOP	20FT	
16	WORKSHOP	20FT	
17	WORKSHOP	20FT	
18	WORKSHOP	20FT	
19	WORKSHOP	20FT	
20	WORKSHOP	20FT	
21	WORKSHOP	20FT	
22	WORKSHOP	20FT	
23	WORKSHOP	20FT	
24	WORKSHOP	20FT	
25	WORKSHOP	20FT	
26	WORKSHOP	20FT	
27	WORKSHOP	20FT	
28	WORKSHOP	20FT	
29	WORKSHOP	20FT	
30	WORKSHOP	20FT	
31	WORKSHOP	20FT	
32	WORKSHOP	20FT	
33	WORKSHOP	20FT	
34	WORKSHOP	20FT	
35	WORKSHOP	20FT	
36	WORKSHOP	20FT	
37	WORKSHOP	20FT	

08	16/04/2025	ROPE HATCH ADDED, MOORING AFT MODIFIED, CONTAINERS RE-POSITIONED
REV	DATE	ISSUE DESCRIPTION
THIS IS A CAD PRODUCED DRAWING REPRODUCTION OR CONFORMANCE TO A THIRD PARTY IS PROHIBITED		
PROJECT:		
CLV OCEAN CONNECTOR		
DESIGNED BY	DATE	16/03/2025
DWG TITLE	GENERAL ARRANGEMENT OF DECK EQUIPMENT	
ARCHITECT	YARD	CONTRACTOR
DWG NO:	G-25007-001	SCALE: 1:100 REV: 08

Simultaneous Lay & Burial Plough

Main features:

- ❑ Vehicle suitable for telecommunication cable installation, product diameter up to 20mm to 160mm, joint/ repeater up to 400mm, 1.5m MBR throughout the vehicle to 1500m Water Depth
- ❑ Vehicle configured for 55Te tow force, 1.5m trench depth, 1500m water depth via shear force trenching
- ❑ Drawbar launch and steering capability for use with a client supplied wide angle LARS
- ❑ Bulkhead connection provision for surveillance including cameras, OA sonar and processor, subsea depth sensor and subsea altimeter
- ❑ 40ft container with space for integration of the deck equipment control system
- ❑ Complete Sensor and Survey Package, inclusive of MBES, Blue view and Oculus Sonar
- ❑ Supported by an 55Ton SMW Tow Winch with Rendering (4500m Wire Rope)
- ❑ Macartney Umbilical Winch with 3000m Umbilical
- ❑ Fully integrated with Vessel DP-System and Vessel Cable Lay System (Makai Lay)

