



MV GENESIS

GEOPHYSICAL, LIGHT GEOTECHNICAL & ENVIRONMENTAL SURVEY VESSEL

NOTICE: Particulars are believed to be correct and subject to revision without prior notice. Interested parties must inspect vessel to check on suitability of the Company's equipment. Company has exercised due diligence to ensure that the data contained herein is reasonably accurate. However, the Company does not warrant the accuracy or completeness of the data. In no event shall the Company be liable for any damages whatsoever arising out of the use or inability to use the data contained herein. All optional equipment for Charterers' usage shall be agreed by the Company. Updated as at 7 February 2023.



MV GENESIS

TECHNICAL SPECIFICATIONS

VESSEL SPECIFICATIONS

Year Built	2011
Flag	Betio, Kirabati
Classification	BV

PRINCIPLE DIMENSIONS

Length Overall	60.0 m
Beam	16.0 m
Maximum Draft	4.85 m
GRT / NRT (MT)	1,642T

COMMUNICATIONS

NAVTEX	NSR NVX-3000
VHF/SSB	2 x Sailor 6222 VHF-DSC
Inmarsat – C1	Furuno MES FELCOM 15 (LRIT)
Inmarsat – C2	Furuno MES FELCOM 15 (SSAS)

(Communications equipment are for safety compliance and Owner's usage only)

PROPULSION & PERFORMANCE

Main Engines	2 x Cummins QSJ 2x2200 BHP@1800RPM
Bow Thruster	1 x Kamome CPP TCB
Speed	08 - 10 knots
Endurance	31 days

NAVIGATION

RADAR	Furuno FAR 21x7, X-Band
Gyro Compass	2 x Anschutz STD-22
GPS	MX Marine MX420
Doppler Speed Log	Furuno DS-80
Echosounder	Furuno FE-700
AIS	Jotron, TR-8000

DECK EQUIPMENT (OPTIONAL)

Deck Crane	1 x Marine ME 5T/8m
Capstan	2 x 6T SWL
Moonpool	2.4m x 2.4m
'A' Frame	10T SWL

ELECTRICAL

Generators	2 main engine driven generators 875 kVA (700 kW), 415 V, 50 Hz 2 diesel generators 313 kVA (250 kW), 415 V, 50 Hz
-------------------	--

SAFETY EQUIPMENT

Rescue/MOB	1 x davit launched
Life Rafts	4 x 25 Persons (Upgradable to 54 pax)
Fire Detection	Fireclass Precept EN 16Zone Panel

ACCOMMODATION

Bunk Capacity	54 persons
Sick Bay	Provided

(Number of berths for Charterers' usage as per charter party agreement)

CAPACITY(s)

Fuel	526m ³
Fresh Water/FWB	690m ³ / 81m ³
Water Maker	5m ³ /day

NOTICE: Particulars are believed to be correct and subject to revision without prior notice. Interested parties must inspect vessel to check on suitability of the Company's equipment. Company has exercised due diligence to ensure that the data contained herein is reasonably accurate. However, the Company does not warrant the accuracy or completeness of the data. In no event shall the Company be liable for any damages whatsoever arising out of the use or inability to use the data contained herein.



MV GENESIS

EQUIPMENTS LIST

POSITIONING AND NAVIGATION

Primary Positioning :	Fugro P2 Pro GNSS
Secondary Positioning :	Hemisphere Vector VS1000
Gyrocompass :	TSS Meridian
Navigation software :	QPS QINSy V.9
Underwater Tracking	Sonardyne Scout Plus Transducer 3x Sonardyne 8271 omni directional transponder beacons
Secondary Heading :	Octan

BATHYMETRY – SBES, MBES & SVP

Single Beam E/S :	Teledyne E20
Multi Beam E/S :	Teledyne T20 Dual Head
Motion Reference :	Octan INS20
Active Frequency :	33/200 kHz
Active Frequency :	190-420 kHz
MBES and Backscatter processing software :	QPS Qimera
SVP probe :	SVP70 MBES SV AML Plus-X

SIDE SCAN SONAR

SSS model :	2x Edgetech 4205 Series
SSS Acquisition software :	Edgetech Discover
Tow Point :	Swing Davit
SSS Frequency :	230 & 540 kHz
SSS processing software :	SonarWiz
Winch :	Electrical winch

SBP

SBP :	Innomar Medium
Acquisition software :	Innomar SIS 2000
SBP Frequency :	100kHz Primary 4-15kHz Secondary
Interpretation software :	SonarWiz / IHS Kingdom Suite

MAGNETOMETER

Model :	1x Geometrics G882 (piggyback SSS)
Acquisition software :	Maglog lite
Sensitivity :	1nT
Processing software :	Magpick / Oasis Montaj

SEABED SAMPLING

Model :	Gravity Corer
Barrel length :	3m, steel
Barrel diameter :	3 ½ inch
Onboard soil tester :	Torvane & Pocket Pentrometer
Weight :	1000kg in air
Deployment :	A frame + 3T SWL winch from stern
Liner :	3 inch core liner
Misc :	End caps etc

2DHR * other options can be provided/varied to optimise objectives

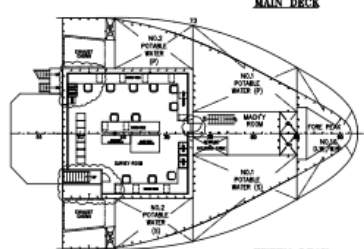
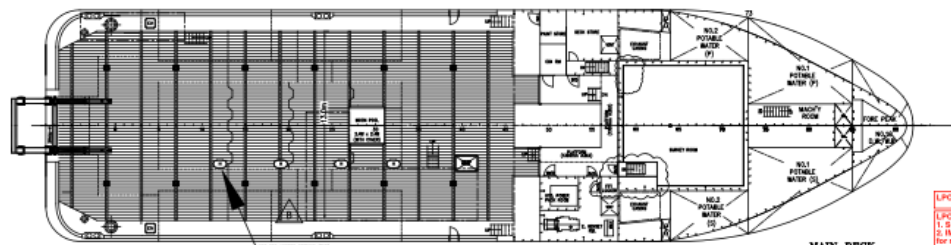
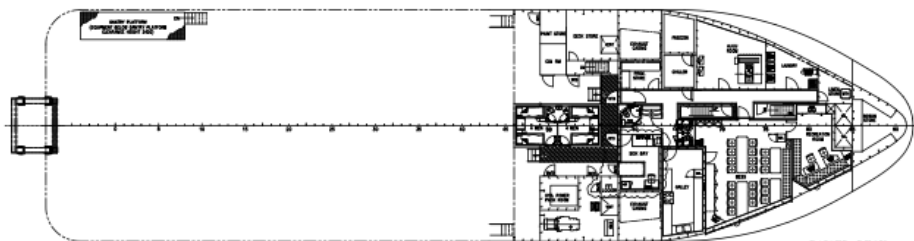
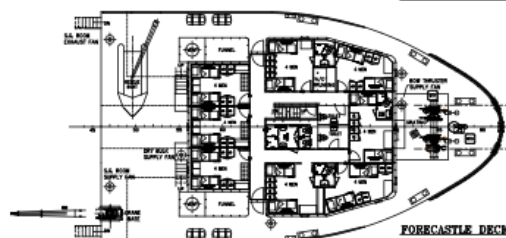
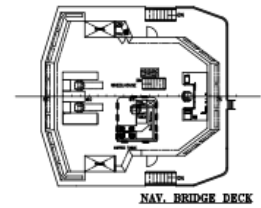
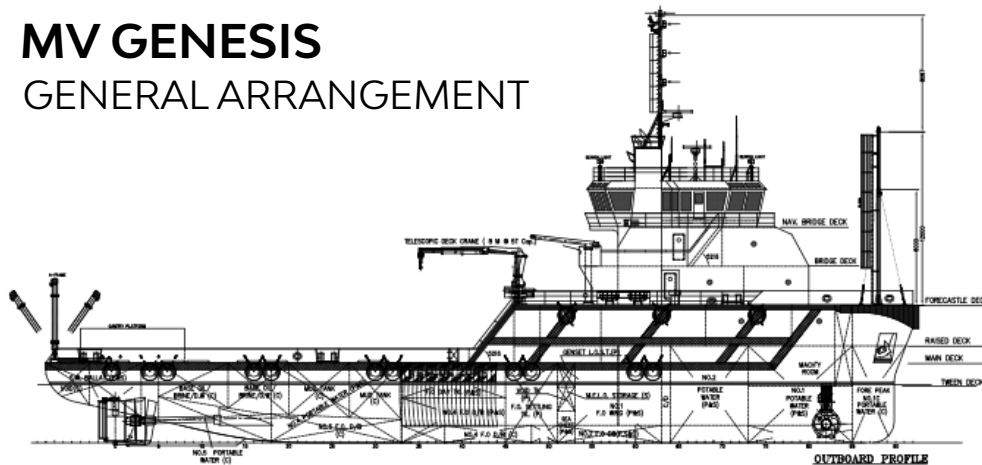
Source :	GI Gun
Streamer :	GeoEel Gel
Group interval :	12.5m
Tail buoy positioning :	800L Mini
Streamer Leveller :	5010 birds 5011 birds
Interpretation system :	GeoVerse
Source Power :	150 cu in
Channel No. :	96
Active Streamer Length :	1200m
Recording system :	Geometrics LH-16 High Frequency CNT-2 Controller
Processing system :	RadExPro / ProMAX

NOTICE: Particulars are believed to be correct and subject to revision without prior notice. Interested parties must inspect vessel to check on suitability of the Company's equipment. Company has exercised due diligence to ensure that the data contained herein is reasonably accurate. However, the Company does not warrant the accuracy or completeness of the data. In no event shall the Company be liable for any damages whatsoever arising out of the use or inability to use the data contained herein.



MV GENESIS

GENERAL ARRANGEMENT



[LFO039384 : This drawing has been reviewed for conversion of all DR/WR tanks to F/WB or Portable Water tanks.

[LFO039384 : The plans have been reviewed within the scope of:

1. SOLAS (edition 2008)
2. IMO Resolution A.535(13) - SPS CODE 1983
for modified part only. Job no. L1132/SPO/0322 and L0222/SPO/0323.

Flag: Kiribati

Complement: Complement 14 men (12 crew and 02 special personnel)

Navigation: Unrestricted navigation (Class), International voyage (Statutory)

Modified part (L1132/SPO/0322):

1. Increase in total person on board from 35 to 54.

2. Increase crew cabin capacity (additional 11 men).

3. Additional accommodation bunk (additional 8 men).

4. Additional Living appliances.

Modified part (L0222/SPO/0323):

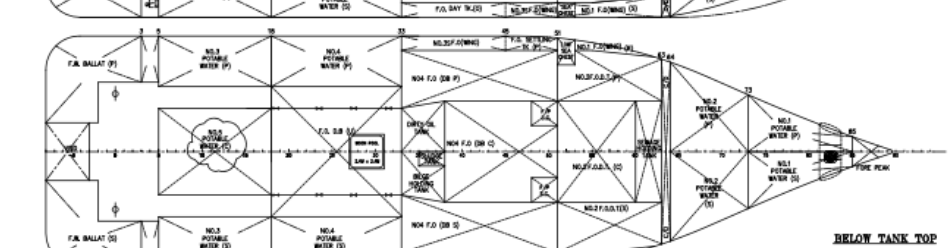
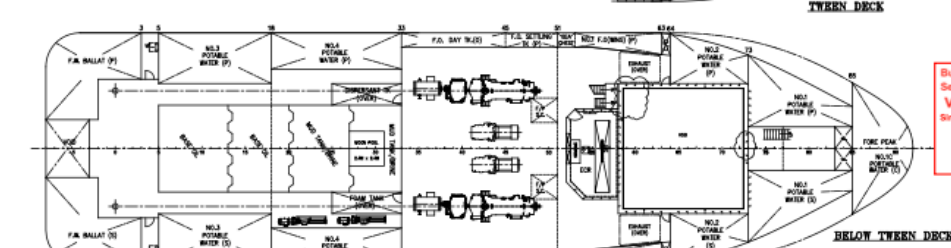
1. Forward mast installation.

PRINCIPAL PARTICULARS

LENGTH O.A.	60.00m
LENGTH W.L.	58.74m
BEAM MLD.	16.00m
DEPTH MLD.	5.50m
DRAFT DESIGNED/max.	4.20m/4.85m
DWT	1150t/1650t
COMPLEMENT	54 MEN
POTABLE WATER	692m ³ (Approx)
F.O	522m ³ (Approx)
F.W.B.	81m ³ (Approx)
LIQUID MUD	
BASE OIL/BRINE/L.MUD	159m ³
FOAM	10m ³
DISPERSANT	10m ³
DRY BULK	170m ³
DIRTY OIL	11m ³
BULGE HOLDING	11m ³
DECK SPACE	400m ² (approx.)
DECK CARGO	600tonnes (approx.)

Bureau Veritas Marine & Offshore
Section 1292AA
VU avec commentaires
Singapore, 16-Oct-2023

(Electronic document)
The plan approval office



E	UPDATED BASED ON REV COMMENTS & LATEST SA (REV F).	26/06/2023	QS
D	FOR WAST ADDED REQUESTED BY CLIENT.	26/07/2023	QS
C	NEW CREW CAIN ADDED IN MAIN DECK REQUESTED BY LEVEL.	12/12/2022	QS
B	CREW CAIN UPDATES REQUESTED BY CLIENT.	20/10/2022	QS
A	CONVERT ALL S.W. / S.W.B. TANKS TO PORTABLE WATER TANKS.	27/10/2022	QS
Rev.	Detail of Modifications	Date	Done by
	JENJOSH MARINE DESIGN PTE LTD NO.7030 Northway@BANK, #03-14 Ang Mo Kio Ave 5 SINGAPORE 569890 Tel: (65) 6884 4508 Fax: (65) 6884 4509 E-Mail: info@jenjoshgroup.com		
Client:	TRINITY OFFSHORE PTE LTD		
Builder:	EASTERNMARINE SHIPBUILDING SDN BHD		
Ship Name:	GENESIS		
Hull No.:	EM78	Class ID:	BV1292AA
Project:	60M SPECIAL SERVICE SURVEY VESSEL		
Title:	GENERAL ARRANGEMENT		
Drawn:	QS	Proj. No.:	AJ041
Checked:	SJ	Draw. No.:	AJ041-01
		Scale:	1 : 175
		Date:	26/10/2022
		Rev.:	E
		File name:	AJ041-01RevE GA

