



## OSV IEVOLI RELUME

THE VESSEL IS EQUIPPED AND FITTED FOR THE FOLLOWING CONTINGENCY SERVICES:

- GEOPHYSICAL SURVEY DUTIES
- GEOTECHNICAL SURVEY DUTIES
- ROV AND DIVING SHIP
- SUBSEA ACTIVITIES

### MAIN DESCRIPTION

Year Built : 2004  
 Vessel built : Damen Shipyard – Galati (Romania)  
 Type : Offshore Survey Vessel / DP2  
 Classification : **RINA** - C ✕ Hull ✕ Mach - Supply Vessel, Special Service; Unrestricted Navigation;  
 Additional Notes : ✕ AUT-UMS, ✕ Dynapos DP2; SPS; INWATERSURVEY; ✕ SYS-IBS; ✕ SYS-NEQ-1  
 Port of registry : Naples n. 630  
 Flag : Italian  
 Call Sign : I B C F  
 IMO Nr. : 9280720  
 MMSI Nr. : 247483600  
 Regulations : RINA, COLREG, Load Line, SOLAS Certificates, Tonnage Certificate, Marpol Annex I,II,IV,V, VI, IMO A493-494, IMO A749 (18), IMO 673 (16), IMO A325, ISPS Code, MSC 645, MSC 664, MSC 235 (82), MSC 266 (84)

### MAIN PARTICULARS

LOA : 82,60 m  
 Length PP : 73,60 m  
 Breath Moulded : 16,50 m  
 Depth Moulded : 6,80 m  
 Summer Draft : 4,50 m  
 Gross tonnage : 3526 Tonn  
 Net tonnage : 1057 Tonn

### PERFORMANCE

Max Speed : 13,00 Knts - 12 m3/day  
 Service Speed : 10,00 Knts - 08 m3/day  
 DP2 Survey speed : 03-06 m3/day  
 Port consumption : 0,5-1,5 m3/day  
 Type of Fuel : M.G.O.

### BUNKER CAPACITIES

Fuel : 540 m3  
 Fresh water : 145 m3  
 Fresh water production : 2 x RO plants w/output 80 m3/day  
 Endurance at Sea : About 50 days

### DECK CAPACITIES

Dead weight : 1500 Tonn  
 Deck cargo : 1100 Tonn  
 Cargo deck dimensions : 36,60 x 13,00 m  
 Main deck area : 260 m<sup>2</sup>  
 Main deck strength : 5 Tonn/m<sup>2</sup>  
 Mezzanine deck area : 180 m<sup>2</sup>  
 Mezzanine deck strength : 3 Tonn/m<sup>2</sup>

### DECK EQUIPMENTS

Capstans : 4 x 10 Tonn  
 Offshore Subsea : Starboard mounted  
 Knuckle Boom Crane : AHC - SWL 25 Tonn @ 12 m  
 1000 mtrs lifting height  
 Telescopic Crane : Port-side mounted  
 SWL 11 Tonn @ 12 m  
 Stern A-Frame : SWL 5 Tonn

### BATHYMETRY AND GEOPHYSICS

Hull Gondola : Fitted  
 Multibeam Echo Sounder : Kongsberg  
 Single beam Echo Sounder : Kongsberg

### GENERATORS AND PROPULSION

Main generators : Wartsila  
 2 x 8L20 - 1317 kW/each  
 2 x 6L20 - 988 kW/each  
 Power Supply : Wartsila  
 2 x 4L20 - 420 kW/each  
 Crane and deck power  
 Propellers : RR - 2 x 1500 kW Azimuth Thrusters  
 Variable speed in nozzles  
 Tunnel thruster : RR - 2 x Tunnel Bow Thruster  
 2 x 700 kW/each  
 Emergency generator : 1 x 145 kW

### DP SYSTEM - MANOEUVRING

DP Class : II  
 DP Type : Kongsberg  
 Gyro Compass : 3 Navigat X Mk1  
 Position Reference Units : 3 x DGPS  
 2 x Wind Sensor  
 1 x Tautwire Bandak  
 Radio Reference : 1 x RADIUS 1000  
 Acoustic Reference : 1 x HIPAP 501  
 Motion Reference Unit : 2 x MRU Seatex  
 ERN :  
 Joystick : Kongsberg C-Joy / Fully integrated  
 Serviceable from various wheelhouse positions + 1 portable

### NAVIGATION EQUIPMENT

- 1 x Radar, SPERRY MARINE, ARPA X-band  
 - 1 x Radar, SPERRY MARINE, ARPA S-band  
 - 2 x high resolution color display, radar plotter 19"  
 - 1 x Radar repeater (slave radar) at aft wheelhouse console  
 - 2 x WARTSILA ECDIS  
 - 2 x GPS JRC, JLR-7500  
 - 1 x Navtex NCR 333  
 - 1 x Echo Sounder SPERRY 5000  
 - 1 x Doppler Speed Log – SPERRY 600SD  
 - 1 x AIS, JRC JHS-183  
 - 1 x Magnetic Compass PLATH  
 - 1 x AUTOPILOT SPERRY 4000 NAVI PILOT  
 - 1 x Doppler Log - Off Course Alarm JRC  
 - 1 x BNWAS/1, NAVGARD  
 - 1 x Voyage Data recorder SPERRY

CCTV coverage for all key areas with display at Wheelhouse and ECR

### COMMUNICATION EQUIPMENT

GMDSS Station Area A1+A2+A3  
 - 1 FBB 500  
 - 1 MF/HF SAILOR 6000  
 - 2 VHF 7222 / 1VHF 6210  
 - 3 Emergency VHF ICOM IC-GM1600E  
 - 2 INMARSAT C, 1 FURUNO FELCOM 18 – 1 SAILOR 6110  
 - 1 INM-C, SSAS, SAILOR  
 - 1 EPIRB JOTRON TRON 60 AIS  
 - 2 SART JOTRON TRON SART 20  
 - 1 Public Address System  
 - Talk Back System between DP station, Control Rooms and ECR

### ACCOMODATION

	Type of cabins	No. of cabins	No. Of berths
1 man cabins		10	10
2 man cabins		28	56
Hospital / Dispensary		1	1
Total number of bunks			66 + 1
Meeting Room	: Fitted		
Client Office	: Fitted		
Processing Office	: Fitted		
Ship's Office	: Fitted		
Recreation Rooms	: Gym, Day room Lounge, Smoking Room		
Sky Lobby	: Fitted		

### RESCUE AND LIFESAVING EQUIPMENT

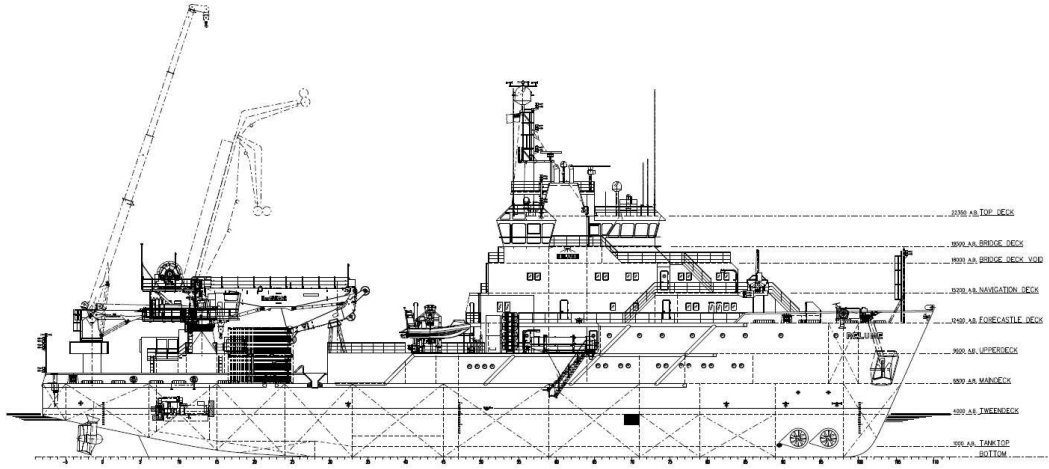
- 1 x Rescue Boat (8 pax)
- 8 x Liferafts (25 pax each)
- 2 x Search Light remotely controlled from bridge
- 6 x Lifebuoys provided with strobe lights and lifelines
- 1 x Hospital with treatment bench, racks for stretchers, Desk, medicine, poison locker
- 1x Dispensary with medical equipments / medicine in accordance with Flag's State and International requirements



This specification is subject to alteration without prior notice.

# MARNAVI

# Ievoli Relume - Offshore Survey Vessel



Whilst care has been taken in the preparation of this document, the data and/or information referred to herein are purely indicative and are not contractually binding. They must be checked with reference to the specific operations and are subject to change. No liability is accepted by the owners for any errors which may exist in this document.

